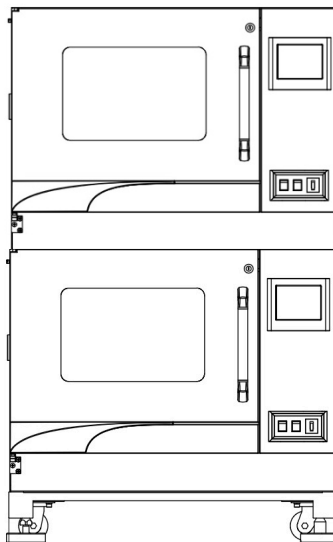


# User's Manual

## Stacking Kit

**This Manual applies to:**

**Modes: Incu-Shake Compact**



# 1. PREPARATION

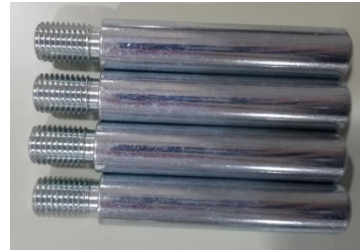
## TOOLS NEEDED:



Philip Screwdriver



M8 Allen Key



Stacking Handle Bars (4 pcs, included with main unit)

# 2. PREPARE TOP UNIT FOR STACKING

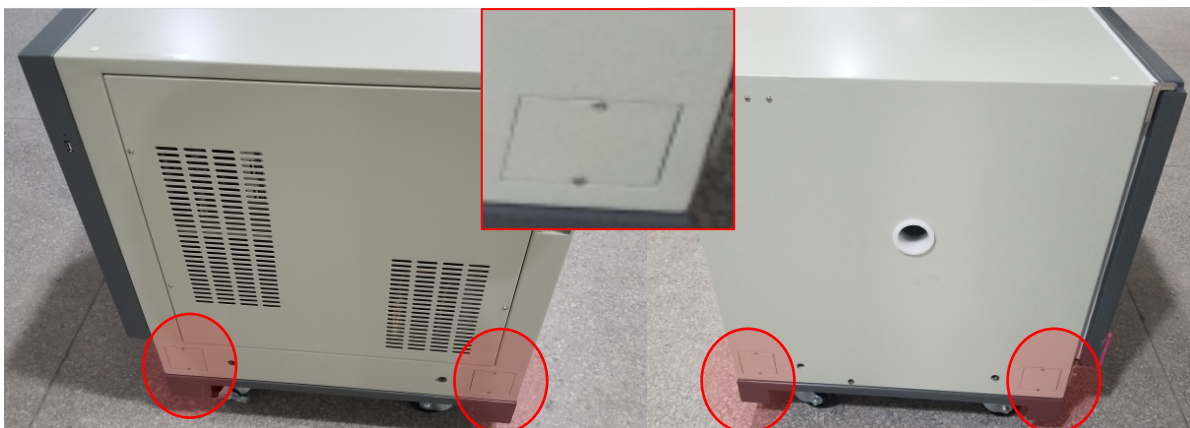
## 2.1 Remove the standard base off the top unit



### **Attention:**

Each Incu-Shake Compact comes standard with a low base H15cm. The 15cm standard base must be removed before the unit can be stacked onto another existing unit.

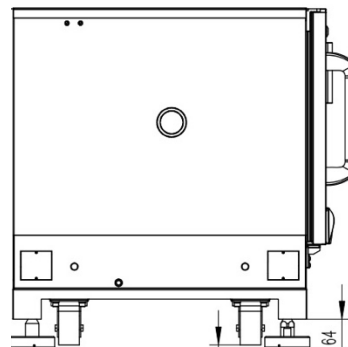
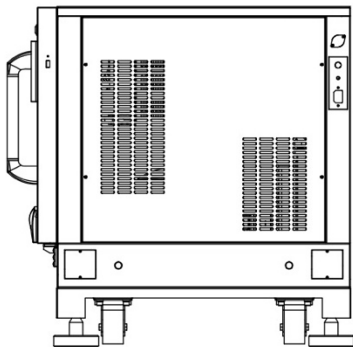
## 2.2 Unscrew the Philip screws on four cover plates on each side of the main unit.



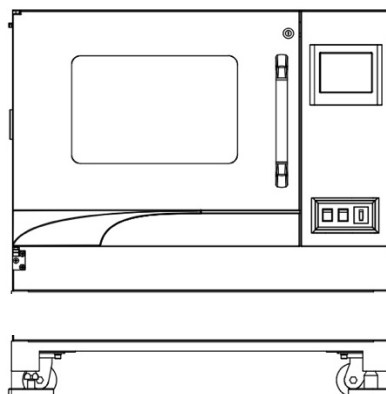
## 2.3 Once the plates are removed, Use the M8 Allen key to unscrew the inner socket head bolts connecting the main unit on the low base. Keep the inner socket head bolts for use in Step 3.6.



- 2.4 Remove the four plastic caps on both side walls and install the stacking bar handles. The stacking bar handles can be used when performing the stacking operation with manpower. Please be noted that each single unit weighs up to 150kg.



- 2.5 Then the main unit can be detached from the standard 15cm low base.





#### **WARNING:**

- Manual stacking can be dangerous!
- Each Incu-Shake Compact weighs up to 150kg.
- Mind your safety and take extra cautions when handling stacking manually with the bar handles.
- Use mechanical assistance whenever possible, such as forklift or hydraulic lifter.

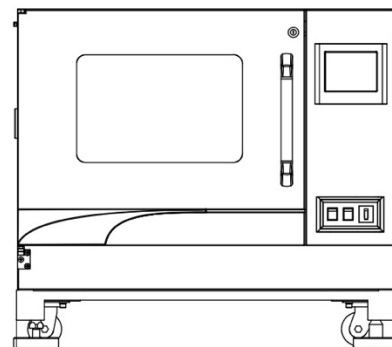
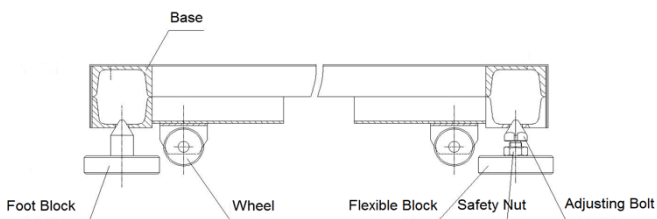
## **3. PREPARE BOTTOM UNIT FOR MOUNTING**

- 3.1 Before starting stacking your equipment, the bottom unit must be placed horizontally on a solid, flat floor, and elevated and levelled with three foot blocks and one flexible block (with adjustable bolt).



### **Safety instruction!**

Make sure the unit is levelled and stands firmly on the floor before stacking.

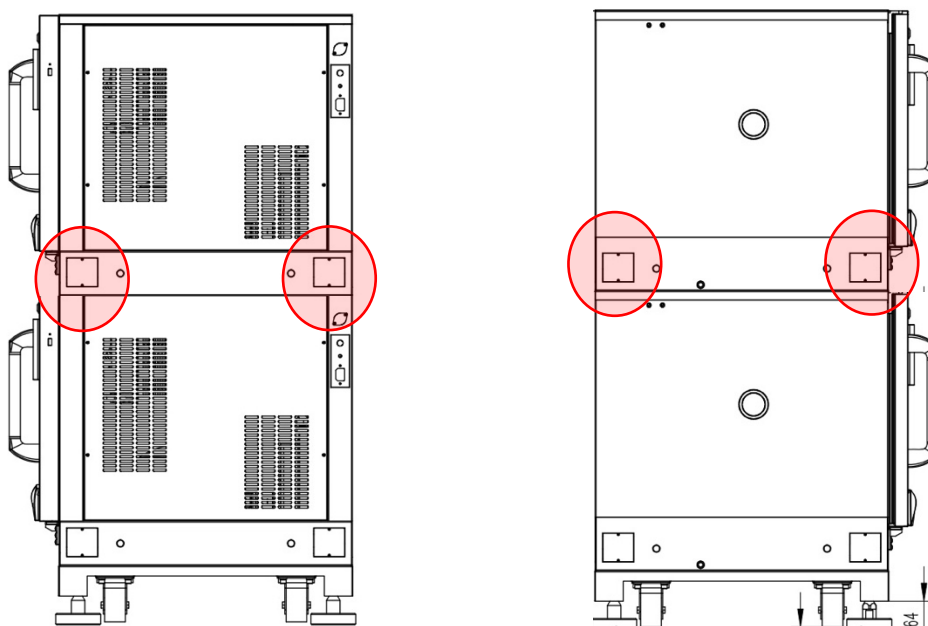


- 3.2 Remove the four (4) plastic caps that cover the mounting holes on the top of the unit.



## 4. STACKING AND MOUNTING

- 4.1 Using a forklift or manually lift to raise the bottom Incu-Shake Compact (without base)
- 4.2 With two assistants guiding the shaker from opposite sides, lower the unit onto the bottom unit, rear end first.
- 4.3 Manually adjust the position of the top unit, and make sure the holes of the top unit aligns with the mounting holes of top of the bottom unit.
- 4.4 Install the (4) inner socket head bolts onto the top unit, and fasten the both units together.



- 4.5 Install cover plates back in place, fasten the Phillip screws and the stacking is finished.