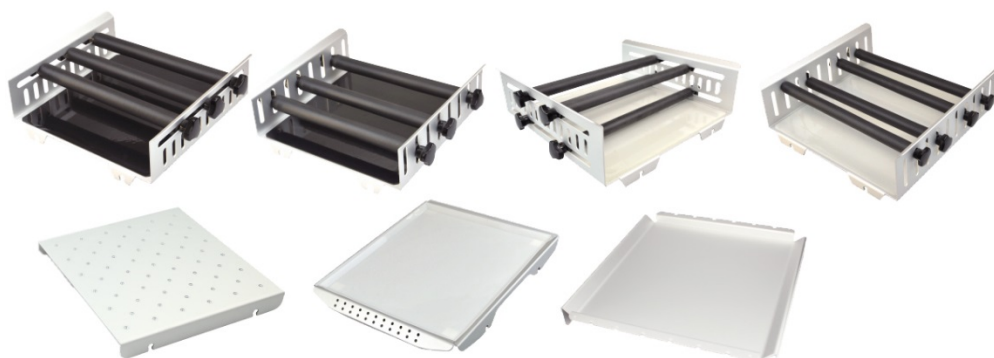


SciQuip Benchtop Shakers



SciQuip Laboratory Platform Shakers offer fantastic quality and value for money. A selection of different platforms are available, making them ideal for use with culture flasks, Petri dishes, Erlenmeyer flasks, bottles and other vessels. The movement on both the linear and orbiting shaker ensure optimum agitation for the relevant applications. SciQuip orbital and linear shakers incorporate a timer (excluding Basic), allowing the user to specify the length time required for agitation, along with the option to run continuously.

- Compact, orbital or linear models
- Maximum shaking weight from 2 to 7.5kg
- LCD display for speed and time adjustment, makes it possible to read the speed, timer function and operating mode (excluding Basic)
- Wide range of attachment combinations for most types of flask
- Electronic adjustment of speed and timer
- Brushless motor
- Over speed detection and protection



Technical Specifications

	O3 & L3 (Basic)	O2 & L2 (Pro)	O7-5 & L7-5 (Pro)	Orbitor (Heavy Duty)	Recipricator (Heavy Duty)
Order Number	SP2250-O3 SP2250-L3	SP2250-O2 SP2250-L2	SP2250-O7 SP2250-L7	SQ-4310	SQ-4320
Shaking movement	Orbital/Linear	Orbital/Linear	Orbital/Linear	Orbital	Linear
Orbital diameter	20mm	4mm	10mm	30mm	20, 24, 30, 40mm Adjustable
Max. load	3.0kg	2.5kg	7.5kg	7.5kg	7.5kg
Speed range [rpm]	0-200	100-800 (Orbital) 100-350 (Linear)	100-500 (Orbital) 100-350 (Linear)	20-300	20-300
Timer	No	Yes	Yes	Yes	Yes
Time setting range	—	1-1,199min	1-1,199min	0-30,000min	0-30,000mn
Dimensions (WxHxD)	270x110x330mm	270x110x330mm	370x100x420mm	400x360x235mm	400x350x150mm
Weight	3.1	8	14	25	15
RS232 interface	No	Yes	Yes	No	No
Platform Fitted as standard	Grip Mat	None	None	Roller Bar	Flask Clamp

SciQuip Ltd
Newtown
Wem
Shropshire
SY4 5NU, UK

Tel: +44 (0)1939 234222
Fax: +44 (0)1939 234221
Email: info@sciquip.co.uk
www.sciquip.co.uk

The SciQuip laboratory benchtop rocker shakers create a perfectly smooth see-saw wave motion within culture flasks and petri dishes. The Rocker (SQ-4330) also has an adjustable tilt angle to optimise the mixing to the vessel. Ultra quiet motors and weighted, rubber mounted bases avoid any transfer of vibration or noise into the bench-top. Compact design yet capable of handling large loads.

SP2256

- Rocking Motion angle 7°
- Max Load capacity is 3kg
- Speed Range of 10-80rpm
- LED display of time and speed
- Supplier with grip mat platform
- Wide range of platforms available

SP2252

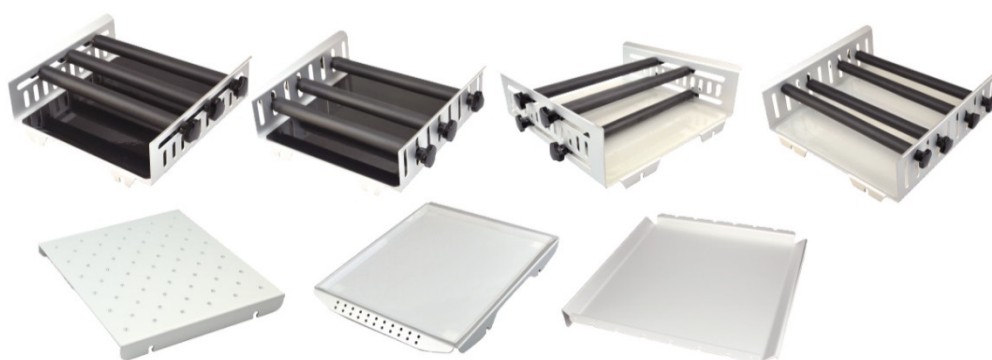
- Rocking Motion angle 9°
- Max load capacity is 10kg
- Speed Range of 10-70rpm
- LCD display of time and speed
- Supplier with grip mat platform
- Wide range of platforms available

SQ-4330

- Rocking Motion angle 5°, 8°, 10°, 12° Adjustable
- Max Load capacity is 4kg
- Speed Range of 20-80rpm
- LCD display of time and speed
- Microprocessor control
- Password protected settings
- Cold room incubator compatible
- Supplied with grip mat platform



Our range of laboratory Rocker Shakers covers LED, Pro and Heavy Duty to cater for simple processing, high accuracy research and constant use production.

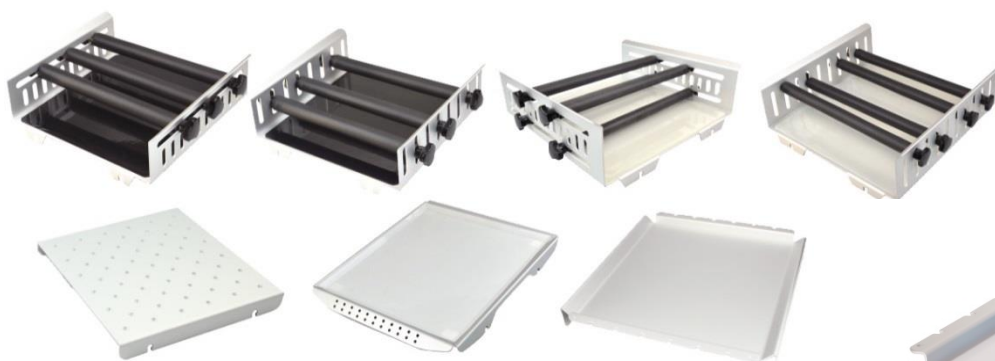


Technical Specifications

	R3 (LED)	R10 (Pro)	Rocker (Heavy Duty)
Order Number	SP2256	SP2252	SQ-4330
Shaking movement	Rocking (see-saw)	Rocking (see-saw)	Rocking (see-saw)
Tilting angle	7°	9°	5°, 8°, 10°, 12° Adjustable
Max. load	3.0kg	10.0kg	4.0kg
Speed range	2-80rpm	2-70rpm	2-80rpm
Display	LED	LCD	LCD
Control	Digital	Digital	Digital
Timer	Yes	Yes	Yes
Time setting range	1min - 20h	1min - 20h	0 - 500h
Dimensions (WxHxD)	270x330x130mm	360x410x200mm	400x350x190mm
Weight	3.2kg	9.0kg	10.0kg
Power	20W	50W	25W
Platform Fitted as standard	Universal Grip Mat	Universal Grip Mat	Universal Grip Mat
Other platforms available	Yes	Yes	No

The SciQuip laboratory benchtop 3D shakers create a perfectly smooth circular tilting motion within culture flasks and petri dishes. Both units are fitted with quiet, powerful and maintenance free DC motors and are a reliable and robust solution for any laboratory. The range covers the following key features:

- Run Timer
- Soft start with smooth acceleration
- Wide speed range for a variety of applications
- Supplied with grip mat platform
- Cold room and incubator compatible
- IP21 rated

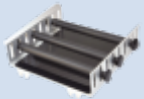




Technical Specifications

	3D LED	3D (Pro)
Order Number	SP2258	SP2254
Shaking movement	3D Orbiting	3D Orbiting
Tilting angle	7°	9°
Max. load	3.0kg	5.0kg
Speed range	2 - 80rpm	2 - 70rpm
Display	LED	LCD
Control	Digital	Digital
Timer	Yes	Yes
Time setting range	1min - 20h	1min - 20h
Dimensions (WxHxD)	270x330x130mm	360x410x200mm
Weight	2.7kg	9.0kg
Power	20W	50W
Platform Fitted as standard	Universal Grip Mat	Universal Grip Mat
Other platforms available	Yes	Yes

SciQuip Ltd
Newtown
Wem
Shropshire
SY4 5NU, UK

Tel: +44 (0)1939 234222
Fax: +44 (0)1939 234221
Email: info@sciquip.co.uk
www.sciquip.co.uk

	Description	Suitable for	Image
SP2250-SK180.1	Universal Roller Bar Platform	SP2250-O3 & L3 SP2250-O2 & L2 SP2256 SP2258	
SP2250-SK330.1	Universal Roller Bar Platform	SP2250-O7 SP2250-L7 SP2252 SP2254	
SP2250-SK180.2	Clamp Platform (bare)	SP2250-O3 & L3 SP2250-O2 & L2 SP2256 SP2258	
SP2250-SK330.2	Clamp Platform (bare)	SP2250-O7 SP2250-L7 SP2252 SP2254	
SP2250-SK180.3	Lengthways Roller Bar Platform	SP2250-O3 & L3 SP2250-O2 & L2 SP2256 SP2258	
SP2250-SK330.3	Lengthways Roller Bar Platform	SP2250-O7 SP2250-L7 SP2252 SP2254	
SP2250-SK180.4	Grip Mat Platform	SP2250-O3 & L3 SP2250-O2 & L2 SP2256 SP2258	
SP2250-SK330.5	Grip Mat Platform	SP2250-O7 SP2250-L7 SP2252 SP2254	
SQ-491040	Universal Spring Platform for Tubes & Small Flasks	SQ-4310	
SQ-491041	Universal Spring Platform for Tubes & Small Flasks	SQ-4320	