

4-General Glassware



Section 4 – General Laboratory Products

Ampoules.....	G3
Autoclave Bags.....	G4
Beakers.....	G4
Bells, Aseptic Filling.....	G5
Bottles, Media Storage.....	G5
Closures, PP & SST.....	G8,9
Collector™ Homogenizer.....	G11
Chromatography Vials & Accessories.....	G12
Coverslips, Photo-etched-Round-Rectangular.....	G14
Cylinders.....	G15
Detergents.....	G16
Flasks (see also Spinner Flasks in Section 3).....	G18
Microscope Slides.....	G24
Pipettes, Canisters & Accessories.....	G26
Pipette Plugger.....	G31
Pipette-Aids.....	G33
Tissue Homogenizer.....	G33
Homogenizer Drive & Glass Shaft Adapters.....	G35
Tubes & Tube Racks.....	G35

Freeze Drying Ampoule

- Type 1, Class A Borosilicate glass, flat bottom
- Ideal for freeze drying or cryogenic storage
- Neck has pre-drawn constriction to facilitate sealing

Stock No.	Length (mm)	Capacity (mL)	Case Qty.
4019-00001	80	1	72



Freeze Drying Ampoule

- Type 1, Class A Borosilicate glass, round bottom
- Tubular with firing off constriction on neck
- Rigidly controlled bottom to withstand pressure at low temperature

Stock No.	Length (mm)	Capacity (mL)	Case Qty.
4024-50000	105	0.5	144
4024-00001	145	1	144
4024-00002	145	2	144

Freeze Drying Ampoule

- Type 1, Class A Borosilicate glass
- Tubular
- Round bottom

Stock No.	Length (mm)	Capacity (mL)	Case Qty.
4025-00001	127	1	144
4025-00002	145	2	144
4025-00003	145	3	144
4025-00004	170	4	144



Autoclave Sterilization Bags

- Rugged polypropylene bags withstand 130°C
- OSHA Biohazard Symbol imprinted on bags



Stock No.	Description	Size (Inches)	Qty
2200-12240	Autoclave Bag	12 x 24	100
2200-24300	Autoclave Bag	24 x 30	100
2200-24360	Autoclave Bag	24 x 36	100

Griffin Beaker, Heavy Wall*

- Heavy duty break resistant lip formed by hand tooling
- Graduated for approximate volumes
- Type 1, Class A Borosilicate glass

Stock No.	Capacity (mL)	OD x OAH (mm)	Case Qty.
5620-00005	5	20 x 23	12
5620-00050	50	41 x 56	12
5620-00100	100	51 x 65	12
5620-00250	250	70 x 87	12
5620-00400	400	80 x 106	12
5620-00600	600	95 x 110	12
5620-01000	1000	110 x 145	3
5620-02000	2000	134 x 190	3
5620-04000	4000	160 x 250	2

* Larger Sizes Available, Please Contact Customer Service



Standard Wall Beaker

- Manufactured from Type 1, Class A Borosilicate glass
- Ideal for general laboratory use
- White double scale graduations on 250mL and larger sizes



Stock No.	Capacity (mL)	OD x OAH (mm)	Case Qty.
5621-00050	50	41 x 58	12
5621-00100	100	50 x 69	12
5621-00150	150	58 x 80	12
5621-00250	250	68 x 95	12
5621-00400	400	75 x 111	12
5621-00600	600	88 x 123	6
5621-00800	800	99 x 137	6
5621-01000	1000	106 x 148	6
5621-02000	2000	129 x 190	4

Aseptic Filling Bell

- Attaches to reservoir with rubber tubing
- Receiving vessel is placed under the bell
- Sizes for tubes and bottles
- Type 1, Class A Borosilicate glass

Stock No.	I.D. of Bell (mm)	Height (mm)	Case Qty.
5610-00020*†	22	75	2
5610-00040*†	41	95	2
5610-00050*††	49	100	2
5610-00070**††	70	125	2
5610-00100**††	104	130	2

* For use with tubes; ** For use with bottles

† tubing I.D. 1/4"; †† tubing I.D. 1/2"

Special I.D. sizes and hose connection configurations are available upon special request.



Media Storage Bottle

- Borosilicate glass Type 1, Class B
- Large opening and sloping shoulders facilitate pouring and cleaning
- Heavier walls prevent breakage
- Marking area and approximate graduations
- Supplied with rubber lined 33mm black phenolic screw cap (38mm on 1000mL)

Stock No.	Capacity (mL)	OD x OAH (mm)	Case Qty.
5636-00125	125	55 x 120	12
5636-00250	250	66 x 149	12
5636-00533	500	88 x 187	12
5636-01038	1000	103 x 231	6



Media Storage Bottle, PP Closure

- Borosilicate glass Type 1, Class A
- 45mm linerless polypropylene screw caps (32mm on 50ml bottle)
- Polypropylene pouring ring for drip free pouring

Stock No.	Capacity (mL)	OD x OAH (mm)	Case Qty.
5637-00050	50	46 x 87	10
5637-00100	100	56 x 100	10
5637-00250	250	70 x 138	10
5637-00500	500	85 x 176	10
5637-01000	1000	101 x 225	10
5637-02000	2000	136 x 260	10
5637-05000	5000	182 x 330	1
5637-10000	10000	227 x 410	1

Plastic Coating Available



Media Storage Bottle w/o Cap

- Borosilicate glass Type 1, Class A
- Same as 5637 Media Storage Bottles but without caps or pouring rings.
- See page G-8 for available 32mm and 45mm caps and rings.



Stock No.	Capacity (mL)	Thread (mm)	OD x OAH (mm)	Case Qty.
5637-60050	50	32	46 x 87	10
5637-60100	100	45	56 x 100	10
5637-60250	250	45	70 x 138	10
5637-60500	500	45	86 x 176	10
5637-61000	1000	45	101 x 225	10
5637-62000	2000	45	136 x 260	10
5637-65000	5000	45	182 x 330	1
5637-67000	10000	45	227 x 410	1
5637-68000	15000	45	268 x 445	1
5637-69000	20000	45	288 x 505	1

Media Storage Bottle w/o Cap, Amberized

- Borosilicate glass Type 1, Class A, amber stained
- Same as 5637 Media Storage Bottles but without caps or pouring rings
- Protection up to 500 nm
- See page G-8 for available 32mm and 45mm caps and rings



Stock No.	Capacity (mL)	Thread (mm)	OD x OAH (mm)	Case Qty.
5637-70050	50	32	46 x 87	10
5637-70100	100	45	56 x 100	10
5637-70250	250	45	70 x 138	10
5637-70500	500	45	86 x 176	10
5637-71000	1000	45	101 x 225	10
5637-72000	2000	45	136 x 260	10
5637-75000	5000	45	182 x 330	1
5637-77000	10000	45	227 x 410	1

Square Media Bottles

- Borosilicate glass Type 1, Class A
- 32mm or 45mm blue polypropylene caps and pouring rings (140°C)
- Space saving square design with sloped shoulder for easy cleaning
- Red PBT caps available for high temperature applications (200°C)
- Shoulder groove indicates maximum volume for each size



Stock No.	Capacity (mL)	Thread (mm)	Dimensions (mm)	Case Qty.
5637-40100	100	32	50x50x105	10
5637-40250	250	45	64x64x138	10
5637-40500	500	45	78x78x176	10
5637-41000	1000	45	94x94x218	10

Media Bottle Replacement Cap

Stock No.	Diameter	Case Qty.
2029-00038	38mm	36



Media Bottle Replacement Cap

Stock No.	Diameter	Case Qty.
5636-33430	33mm	72
5636-38430	38mm	72



Stainless Steel Port Assembly for Media Bottles

- Designed for 5637 and 5639 Media Storage Bottles
- Welded, 316L stainless steel construction, ¼ inch OD tubing
- Electropolished finish, continuous seal weld
- Two port model features siphon and vent tubes
- Three port model features siphon, fill and vent tubes
- 45mm polypropylene screw cap and silicone gasket included



Stock No.	Description	Bottle Size (L)
5637-20001	2 Port	1
5637-20002	2 Port	2
5637-20005	2 Port	5
5637-20010	2 Port	10
5637-30001	3 Port	1
5637-30002	3 Port	2
5637-30005	3 Port	5
5637-30010	3 Port	10
A523-599	Cap	~
A523-600	Silicone Gasket	~
A523-608	Cap, red high temp.	~
A523-609	Teflon gasket	~

Roux Culture Bottle

- Working volume is approximately one half total volume
- Offset neck prevents culture from entering neck area
- For large area monolayer cell culture growth
- DeLong® style neck designed for use with 38mm stainless steel closure

Stock No.	Capacity (mL)	Dimensions WxDxH (mm)	Case Qty.
5630-01000	800	124x56x290	6
Closures			
2005-03806	38mm SST Closure		6



Roux Culture Bottle, 38mm

- Working volume is approximately one half total volume
- Offset neck prevents culture from entering neck area
- For large area monolayer cell culture growth
- 38mm deep-skirted, nontoxic, rubber lined black phenolic screw cap included

Stock No.	Capacity (mL)	Dimensions WxDxH (mm)	Case Qty.
5632-01000	800	124x56x290	6
Closures			
2029-00038	38mm cap		36



Linerless PP Cap with Inner Sealing Lip

- Molded from Polypropylene with inner ring that seals into neck of bottle
- Autoclavable to 140°C (steam sterilization)



Stock No.	GL Size	Color	Case Qty.
5637-00032	32	Blue	10
5637-00045	45	Blue	10
5637-00047	45	Green	10
5637-00048	45	Yellow	10
5637-00049	45	Gray	10
Description			
A523-599	45	Cap	
A523-600	45	Silicone Gasket	

High Temperature PBT Cap with Liner

- Red PolyButyleneTerephthalate cap with PTFE faced silicone liner
- Withstands temperature of -45°C to 200°C (steam sterilization)



Stock No.	GL Size	Case Qty.
5637-90032	32	10
5637-90045	45	10
Description		
A523-608	45	Open Top Cap
A523-609	45	Gasket

Pouring Ring, Blue Polypropylene

- Provides drip free pouring
- Protects bottle rim from chipping
- Autoclavable to 140°C (steam sterilization)



Stock No.	GL Size	Case Qty.
5637-10032	32	10
5637-10045	45	10

High Temperature Pouring Ring, Red ETFE

- Red Ethylene-tetrafluoroethylene copolymer
- Provides drip free pouring and protects bottle rim from chipping
- Withstands up to 180°C (steam sterilization)



Stock No.	GL Size	Case Qty.
5637-91032	32	10
5637-91045	45	10

Polypropylene Caps, Open Top and PTFE/Silicone Septa

- 45mm cap has 33mm hole to accommodate 45mm septa or 45mm port assembly
- 32mm cap has 20mm hole to accommodate 32mm septa or 32mm port assembly
- Ideal for addition & withdrawal of contents via syringe



Stock No.	Description	Size	Case Qty.
5637-00035	Cap, Blue PP	32	10
5637-00038	Septa .125 x 1.20"	32	10
5637-00010	Cap, Blue PP	45	10
5637-00015	Cap, Green PP	45	10
5637-00020	Cap, Yellow PP	45	10
5637-00025	Cap, Grey PP	45	10
5637-00030	Septa .125 x 1.70"	45	10

Deep Skirted Screw Caps with Rubber Liners

- Autoclavable, black mineral-filled phenolic resin
- White rubber liners sealed into cap
- Deep skirt reduces risk of contamination



Stock No.	Thread	Case Qty.
2029-00013	13-415	144
2029-00016	15-415	144
2029-00018	18-415	144
2029-00025	24-415	144
2029-00028	28-415	72
2029-00038	38-415	36

Short Skirted Screw Cap with Rubber Liners

- Autoclavable, black mineral-filled phenolic resin with white rubber liner
- Short skirt for use with glass roller bottles



Stock No.	Thread	Case Qty.
7730-00038	38-400	36
2029-00051	51-400	72

Deep Skirted Teflon® Lined Screw Cap

- Autoclavable, black mineral-filled phenolic resin
- Teflon® liner is permanently bonded to cap
- Deep skirt reduces risk of contamination



Stock No.	Thread	Case Qty.
2030-00038	38-415	72

Rubber Lined Screw Cap

- Autoclavable, black, mineral-filled phenolic resin
- White rubber liner



Stock No.	Thread	Case Qty.
5636-33430	33-430	72
5636-38430	38-430	72

Stainless Steel Closures

Stainless steel closures continue to provide excellence in culture tube and flask closures. Manufactured from type 305 stainless steel, they can be used indefinitely without corroding. The fingers grip the outside of the tube firmly and will not lose their resilience through repeated autoclaving or dry heat sterilization.

Stainless Steel Closures with Fingers

Stock No.	For Tube OD (mm)	Case Qty.
2005-00013	13	144
2005-00016	16	144
2005-00018	18	144
2005-01824	18	24
2005-00020	20	144
2005-00025	25	72
2005-02512	25	12
2005-00038	38	36
2005-03812	38	12
2005-03806	38	6
2005-03803	38	3



Stainless Steel Closures without Fingers

Stock No.	For Tube OD (mm)	Case Qty.
2006-00018	18	144

KAP-UTS™ Disposable Closures

- For culture tubes and flasks with DeLong® style necks and access ports
- Manufactured from nontoxic autoclavable polypropylene
- Seven colors promote easy identification
- Six sizes from 13mm to 38mm
- Same evaporation and sterility characteristics as stainless steel closures
- Molded pressure fins for firm grip



Stock No.	Size(mm)	Color	Case Qty.
2007-13001	13	Black	1000
2007-13002	13	Red	1000
2007-13003	13	Yellow	1000
2007-13004	13	Blue	1000
2007-13005	13	White	1000
2007-13006	13	Green	1000
2007-16001	16	Black	1000
2007-16002	16	Red	1000
2007-16003	16	Yellow	1000
2007-16004	16	Blue	1000
2007-16005	16	White	1000
2007-16006	16	Green	1000
2007-18001	18	Black	1000
2007-18002	18	Red	1000
2007-18003	18	Yellow	1000
2007-18004	18	Blue	1000
2007-18005	18	White	1000
2007-18006	18	Green	1000
2007-20001	20	Black	500
2007-20002	20	Red	500
2007-20003	20	Yellow	500
2007-20004	20	Blue	500
2007-20005	20	White	500
2007-20006	20	Green	500
2007-25001	25	Black	500
2007-25002	25	Red	500
2007-25003	25	Yellow	500
2007-25004	25	Blue	500
2007-25005	25	White	500
2007-25006	25	Green	500
2007-25013	25	Natural	500
2007-38005	38	White	250

Silicone Sponge Closures

- Sealed-in silicone sponge filter is ideal for aerobic cultures
- Flanged to fit snugly over outside of neck preventing passage of aerosols
- Withstands dry heat sterilization to 180°C



Stock No.	Size (mm)	For Use With	Case Qty
2004-00002	13-18	13-18 mm Culture Tubes 18 mm screw necks	10
2004-00003	20-25	18-25 mm Culture Tubes 25-50 ml Erlenmeyer Flasks 25-125 ml DeLong® Flasks	10
2004-00004	28	125-300 ml Erlenmeyer Flasks	10
2004-00005	38	38 mm culture tubes 500-1000 ml Erlenmeyer Flasks 250-6000 ml DeLong® Flasks	10

Silicone Sponge Plug Closures

- Tapered silicone sponge with smooth exterior for tight seal
- Extra long for easy insertion and removal
- Fits 25mm culture tubes, 32mm sidearms

Stock No.	Size (mm)	Case Qty.
1924-00032	32	25



Homogenizer, Collector™ Tissue Sieve

- Prepare cell suspensions and gel extraction of proteins
- All stainless steel construction
- Available with 85 mL or 130 mL pans



Stock No.	Description	Size	Case Qty
1985-85000	Collector Complete*	85 mL	1
1985-13000	Collector Complete*	130 mL	1
1985-18500	Collector Pan and Key only	85 mL	1
1985-11300	Collector Pan and Key only	130 mL	1
1985-11516	Glass Pestle Only	16 mm	1
1985-28500	Collector Key Only		1
1985-00010	Replacement Screen Only	10 mesh/1910μ	5
1985-00020	Replacement Screen Only	20 mesh/860μ	5
1985-00030	Replacement Screen Only	30 mesh/520μ	5
1985-00040	Replacement Screen Only	40 mesh/380μ	5
1985-00050	Replacement Screen Only	50 mesh/280μ	5
1985-00060	Replacement Screen Only	60 mesh/230μ	5
1985-00080	Replacement Screen Only	80 mesh/190μ	5
1985-00100	Replacement Screen Only	100 mesh/140μ	5
1985-00150	Replacement Screen Only	150 mesh/94μ	5
1985-00200	Replacement Screen Only	200 mesh/74μ	5
1985-00300	Replacement Screen Only	300 mesh/46μ	5
1985-00400	Replacement Screen Only	400 mesh/38μ	5
1985-00500	Replacement Screen Only	500 mesh/25μ	5

*Collector Complete includes: pan, glass pestle, key and nine screens (one each) 10 to 150 mesh size

Vessel, Flat Bottom, with 2-port Cap Assembly

- Flat bottom borosilicate glass tube with 32mm threaded opening
- Tube measures approximately 32mm OD x 94mm OAL
- Screened with a 10mm white marking spot
- Port assembly is manufactured from 316L stainless steel
- Electropolished for easy cleaning
- Long tube extends approximately 25mm above/below the cap; short tube extends 25mm above the cap
- Supplied with a 32mm open top blue polypropylene cap & white silicone sealing gasket

Stock No.	Description
5637-51000	Cap Assembly Only
5637-28094	Vessel Only
5637-52894	Complete



Autosampler Vials

Screw Thread Vials

- Clear vials manufactured from Type 1 Borosilicate glass
- Amber vials manufactured from Type 1 amber glass
- Designed for use with Varian and other autosamplers



Stock No.	Description	Size (mm)	Case Qty
2070-00010	8mm S/T Clear	12 x 32	1000
2070-00020	8mm S/T Amber	12 x 32	1000
2070-00170	10-425 Clear	12 x 32	1000
2070-00180	10-425 Amber	12 x 32	1000
2070-00190	9-425 Clear RAM*	12 x 32	1000
2070-00200	9-425 Amber RAM*	12 x 32	1000

*Robotic Arm Motion

11mm Aluminum Seal Vials

- Clear vials manufactured from Type 1, Class B Borosilicate glass
- Amber vials manufactured from Type 1 amber glass
- Vials accept 11mm aluminum seals
- Large Opening vials have wider ID for easier sample access
- Designed for use with Hewlett Packard and other autosamplers



Stock No.	Description	Size (mm)	Case Qty
2070-00030	11mm A/S Clear	12 x 32	1000
2070-00040	11mm A/S Amber	12 x 32	1000
2070-00050	11mm A/S Clear, L/O	12 x 32	1000
2070-00060	11mm A/S Amber, L/O	12 x 32	1000
2070-00130	11mm A/S Clear	12 x 32	1000
2070-00140	11mm A/S Amber	12 x 32	1000
2070-00150	11mm A/S w/ Spot	12 x 32	1000
2070-00160	11mm A/S Amb w/Spot	12 x 32	1000

11mm Snap-Seal™ Vials

- Patented Snap-Seal™ design for positive seal
- Manufactured from Type 1, Class A Borosilicate glass
- Vials accept 11mm Snap-Ring Closures
- Developed for use with Hewlett Packard® and other autosamplers

Stock No.	Description	Size (mm)	Case Qty
2070-00070	11mm Clear	12 x 32	1000
2070-00075	11mm PP	12 x 32	1000
2070-00080	11mm Amber	12 x 32	1000



13mm Screw Thread Vials

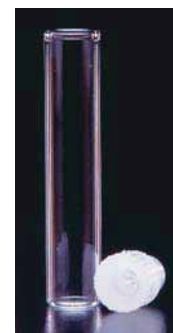
- For use with Shimadzu AOC-14/1400 and Waters 48 model autosamplers

Stock No.	Description	Size (mm)	Case Qty
2070-00090	13mm S/T Clear	15 x 45	1000
2070-00100	13mm S/T Amber	15 x 45	1000

8x40 mm Shell Vials w/Plug Insert

- Designed for the Waters WISP™ 96-position autosampler
- Plug insert sold separately

Stock No.	Description	Size (mm)	Case Qty
2070-00110	8mm Shell Vial Clear	8 x 40	1000
2070-00120	8mm Shell Vial Amber	8 x 40	1000
2070-03700	8mm Plug Insert		1000



Closures & Septa

Polypropylene Closures w/Open Top

- Designed for standard screw thread vials
- Available with or without septa

Stock No.	Description	GPI (mm)	Case Qty
2070-00500	Black	8-425	1000
2070-00525	Red	8-425	1000
2070-00700	Black, w/Septa	8-425	100
2070-00550	Blue	9-425	1000
2070-00900	Blue w/PTFE/RR septa	9-425	1000
2070-00950	Blue w/PTFE/Sil septa	9-425	1000
2070-00975	Black	10-425	1000
2070-00960	Blue w/PTFE/Sil septa	10-425	1000
2070-00995	Blue	10-425	1000
2070-00600	Black	13-425	1000
2070-00800	Black, w/Septa	13-425	100



Liners

- Designed for standard screw thread vials
- Autoclavable

Stock No.	Description	Size (in)	Case Qty
2070-01000	Red TFE/Silicone	8mm x .065	1000
2070-01600	Red PTFE/Silicone	10mm x .010	1000
2070-01200	Red TFE/Silicone	13mm x .060	1000
2070-01100	White PTFE	8mm x .010	1000
2070-01700	White PTFE	10mm x .010	1000
2070-01300	White PTFE	13mm x .010	1000
2070-01400	PTFE/Red Rubber	9mm x .040	1000
2070-01500	PTFE/Silicone	9mm x .040	1000



Aluminum Seals, Snap-Ring Closures & Inserts With Springs

Aluminum Seals w/TFE/Red Rubber Liner

Stock No.	Description	Size	Case Qty
2070-02000	Aluminum Seal, Silver	11mm	1000
2070-05100	Aluminum Seal, Blue	11mm	1000
2070-05200	Aluminum Seal, Yellow	11mm	1000
2070-05300	Aluminum Seal, Green	11mm	1000

Aluminum Seals w/PTFE/Silicone Liner

Stock No.	Description	Size	Case Qty
2070-05000	Aluminum Seal, Silver	11mm	1000
2070-05400	Poly Crimp Seal, Clear	11mm	1000

Snap-Ring Closures, Clear, with Septa

Stock No.	Description	Size	Case Qty
2070-03000	PTFE Red Rubber	11mm	1000
2070-03100	10 Mil PTFE Liner	11mm	1000
2070-03200	PTFE/Silicone	11mm	1000
2070-03500	PTFE/Silicone/PTFE	11mm	1000





Inserts w/Springs & Flat Bottom Inserts

Stock No.	Description	Capacity	Size (mm)	Case Qty
2070-04000	Conical Bottom	100µL	5 x 29	100
2070-04100	Conical Bottom	250µL	6 x 29	100
2070-04200	Conical Bottom	300µL	6 x 38	100
2070-04300	Flat Bottom	250µL	5 x 31	1000
2070-04400	Flat Bottom	350µL	6 x 30	1000
2070-04600	Flat Bottom	500µL	6 x 25	100



Rectangular and Square Cover Slips

- #1 thickness (0.13 to 0.16mm)
- Packed one ounce (28 gm) per case



Accessories for Chromatography Vials

Stock No.	Description	Size
2070-06000	Rack, White, 12mm	50 position
2070-06100	Rack, Blue, 12mm	50 position
2070-07000	11mm Crimper, Manually Operated	

Stock No.	Size (mm)	Approx. Case Qty.
1916-09009†	9 x 9	765
1916-12222	22 x 22	150
1916-09022†	9 x 22	435
1916-09035†	9 x 35	260
1916-09050†	9 x 50	175
1916-10522†	10.5 x 22	335
1916-10535†	10.5 x 35	215
1916-10550†	10.5 x 50	150
1916-13054†	13 x 54	120
1916-24050	24 x 50	65
1916-25075†	25 x 75	40

†For use with Bellco Leighton Tissue Culture Tubes. page G-38.
Please inquire about special sizes

Round Cover Slips

- # 1 Thickness (0.13 to 0.16mm); Packed 28 gm (1oz) per case
- Float glass 1.52 Refractive Index

Stock No.	Diameter (mm)	Approx. Case Qty
1943-00005	5	1100
1943-00012	12	650
1943-00015	15	378
1943-22222	25	160

Round Cover Slips, German Glass

- Ideal for neural tissue cell cultures and hard-to-attach cells
- Specially developed for fluorescence and confocal microscopy
- #1 Thickness (0.13 to 0.16mm); Packed 28 gm (1oz) per case

Stock No.	Diameter (mm)	Approx. Case Qty
1943-10012	12	650
1943-10015	15	378
1943-10025	25	160

Photo-etched Cover Slips

- 520 alphanumeric coded squares (25mm: 200 areas in diamond pattern)
- .17 - .25mm thick; each square measures 0.6mm x 0.6mm
- Facilitates mounting of micro-manipulated cells or chromosome spreads

Stock No.	Size (mm)	Case Qty.
1916-92525	23 x 23	25
1916-91818	18 x 18	25
1916-90025	25mm round	25



U.S. Patent Number 4,415,405

References: Lin, Pin-Fang and Frank H. Riddle 1981. Photoengraving of Cover Slips and Slides to Facilitate Mounting of Micromanipulated Cells or Chromosome Spreads, Exp. Res. 134:485-488

Cloning Cylinders, Borosilicate Glass*

- Isolate single cells or cell groups within a culture dish population
- Flat ring ends ensure tight sealing with surface of culture dish

Stock No.	ODxOAL (mm)	Case Qty.
2090-00608	6 x 8	125
2090-00808	8 x 8	125
2090-01010	10 x 10	125

*Also available in Stainless Steel and other glass sizes. Call for pricing.



Disinfectant Testing Glazed Cylinder, Borosilicate Glass

- For the Disinfectant Testing Procedure as described in the AOAC manual
- Cylinder ends are lightly glazed

Stock No.	ODxOAL (mm)	Case Qty.
2091-00808*	8 x 8	125
2091-08010^	8 x 10	125

*Ref: Rubino Et Al. 1992 Hard Surface Carrier Test for Efficacy Testing of Disinfectants

^Requires 15mm deep Petri Dish



Class A Cylinders, Graduated, To Contain

- Manufactured from Type 1, Class A borosilicate glass
- Hexagonal bumper guard included (except 2000mL size)
- White double scale graduations

Stock No.	Capacity (ml)	OD x OAH (mm)	Case Qty.
5625-00050	50	24 x 218	4
5625-00100	100	30 x 236	4
5625-00250	250	41 x 301	4
5625-00500	500	53 x 362	2
5625-01000	1000	70 x 422	2
5625-02000	2000	90 x 478	1



7-X® and 7-X O-Matic® Detergents

- Liquid concentrate of anionic surfactants and special solvents, 5% solution at pH 7.8
- Non-caustic, non-acidic and chemically mild
- For all laboratory glassware and surgical instruments



Stock No.	Description	Size (gallons)	Case Qty.
4752-10001	7-X ®	1	4
4752-10005	7-X ®	5	1
4752-20001	7-X® O-Matic	1	4

Biometer Flask

- Designed for the measurement of microbial CO₂ production over time
- Ideal for bioremediation studies
- Manufactured from Borosilicate glass Type 1, Class A
- All components are autoclavable

Stock No.	Description	Capacity
2556-00250	Complete	250mL
2556-10250	Flask Only	250mL
2556-20250	Filter Assembly	
2556-30250	Needle Assembly	



DeLong® Culture Flask with Stainless Steel Closure

- Ideal for growing, storing and mixing of aerobic and anaerobic cultures
- Borosilicate glass Type 1, Class A
- Graduated to approximate volumes



Stock No.	Capacity (mL)	Closure (mm)	OD x OAH (mm)	Case Qty.
2510-00025	25	18	40 x 96	24
2510-00050	50	18	50 x 105	24
2510-00125	125	25*	66 x 136	12
2510-00250	250	38	80 x 160	12
2510-00300	300	38	88 x 170	12
2510-00500	500	38	100 x 205	12
2510-01000	1000	38	128 x 235	6
2510-02000	2000	38	158 x 295	3
2510-03000	3000	38	184 x 340	3
2510-04000	4000	38	205 x 370	3
2510-06000	6000	38	235 x 410	3

**Uses Stainless Steel 25mm Closures only.
For KAP-UTS™ Disposable Closures, see page G-10
For Stainless Steel Closures, see page G-9*

DeLong® Culture Flask without Closure

- Borosilicate glass Type 1, Class A
- Graduated to approximate volumes
- Stainless Steel or KAP-UTS™ Disposable Closures purchased separately

Stock No.	Capacity (mL)	Closure (mm)	OD x OAH (mm)	Case Qty.
2511-00025	25	18	40 x 96	24
2511-00050	50	18	50 x 105	24
2511-00125	125	25*	66 x 136	12
2511-00250	250	38	80 x 160	12
2511-00300	300	38	88 x 170	12
2511-00500	500	38	100 x 205	12
2511-01000	1000	38	128 x 235	6
2511-02000	2000	38	158 x 295	3
2511-04000	4000	38	205 x 370	3
2511-06000	6000	38	235 x 410	3

*Uses Stainless Steel 25mm Closures only.

For KAP-UTS™ Disposable Closures, see page G-10

For Stainless Steel Closures, see page G-9



Erlenmeyer Flask, Graduated

- Ideal for general laboratory media mixing, storage and dispensing
- Narrow mouth with break-resistant lip that resists chipping
- Graduated to approximate volumes
- Borosilicate glass Type 1, Class A



Stock No.	Capacity (mL)	Stopper Size	OD x OAH (mm)	Case Qty.
2504-00025	25	0	39 x 66	24
2504-00050	50	1	50 x 80	24
2504-00125	125	5	66 x 115	12
2504-00250	250	6	80 x 140	12
2504-00300	300	6	88 x 148	12
2504-00500	500	7	100 x 183	12
2504-01000	1000	9	128 x 223	6
2504-02000	2000	10	158 x 290	3
2504-03000	3000	10	184 x 305	3
2504-04000	4000	10	205 x 355	3
2504-06000	6000	10	237 x 395	3

Erlenmeyer Flask, Graduated

- Narrow mouth with heavy duty rim to prevent chipping
- Graduated to approximate volumes
- Ideal for general laboratory use
- Borosilicate glass Type 1, Class A

Stock No.	Capacity (mL)	Stopper Size	OD x OAH (mm)	Case Qty.
2505-00125	125	5	65 x 107	12
2505-00250	250	6	79 x 133	12
2505-00500	500	7	100 x 173	6
2505-01000	1000	9	124 x 214	6



Erlenmeyer Flask with Screw Cap

- Ideal for culture of aerobic & anaerobic organisms, media storage & mixing
- Deep-skirted screw caps protect against contamination
- Borosilicate Glass, Type 1, Class A
- Supplied with rubber lined black phenolic caps
- Graduated to approximate volumes



Stock No.	Capacity (mL)	Cap (mm)	OD x OAH (mm)	Case Qty.
2514-00025	25	18-415	41 x 65	24
2514-00050	50	24-415	50 x 85	24
2514-00125	125	24-415	66 x 125	12
2514-00250	250	38-415	80 x 143	12
2514-00300	300	38-415	88 x 150	12
2514-00500	500	38-415	100 x 190	12
2514-01000	1000	38-415	128 x 220	6
2514-02000	2000	38-415	158 x 275	3
2514-03000	3000	38-415	184 x 320	3
2514-04000	4000	38-415	205 x 350	3
2514-06000	6000	38-415	235 x 390	3

For screw caps, see Stock Number 2029 series, page G-9

Erlenmeyer Flask with 45mm Linerless Screw Cap

- Ideal for all cell culture and media storage purposes
- Borosilicate Type 1, Class A with 45mm PP screw caps and pouring rings
- Provides flexible, secure seal without a liner
- Graduated to approximate volumes

Stock No.	Capacity (mL)	OD x OAH (mm)	Case Qty.
2515-00250	250	80 x 117	12
2515-00500	500	100 x 156	12
2515-01000	1000	128 x 200	6
2515-02000	2000	158 x 260	3
2515-04000	4000	205 x 325	1
2515-06000	6000	235 x 370	1

For screw caps and pouring rings, see Stock Number 5637 series, page G-8



Fernbach Flask, 38mm without Baffles

- DeLong® style neck
- Borosilicate glass Type 1, Class A
- For culturing organisms requiring a large surface to volume



Stock No.	Capacity (mL)	OD x OAH (mm)	Case Qty.
2550-01800	1800	200 x 175	3
2550-02800	2800	205 x 250	3

Closures sold separately. For Stainless Steel Closures, see page G-9
For KAP-UTS™ Disposable Closures, see page G-10

Fernbach Flask, Triple Baffled

- Three side baffles and break resistant lip
- For culturing organisms requiring a large surface to volume ratio
- Borosilicate glass Type 1, Class A

Stock No.	Capacity (mL)	Stopper Size	OD x OAH (mm)	Case Qty.
2551-01800	1800	10	200 x 157	3
2551-02800	2800	13	210 x 225	3



Fernbach Flask, Triple Baffled, 38mm

- DeLong® style neck
- Three bottom baffles
- For cultures requiring a large surface area-to-volume ratio
- Borosilicate glass Type 1, Class A

Stock No.	Capacity (mL)	OD x OAH (mm)	Case Qty.
2554-01800	1800	200 x 175	3
2554-02800	2800	210 x 250	3

Closures sold separately. For Stainless Steel Closures, see page G-9
For KAP-UTS™ Disposable Closures, see page G-10



Fernbach Flask, Triple Baffled, with 45mm PP Linerless Closure

- Borosilicate glass Type 1, Class A
- Three side baffles
- 45mm PP screw cap and pouring ring
- For cultures requiring a large surface area-to-volume ratio

Stock No.	Capacity (mL)	OD x OAH (mm)	Case Qty.
2552-01800	1800	200 x 157	1
2552-02800	2800	210 x 225	1

For replacement caps and rings, see page G-8



Media Storage and Dispensing Flask

- Break resistant lip
- Borosilicate glass Type 1, Class A
- Bottom hose connection accepts 1/2" ID tubing
- Graduated to approximate volumes
- Not for vacuum use

Stock No.	Capacity (mL)	OD* x OAH (mm)	Case Qty.
2530-00250	250	80 x 140	6
2530-00500	500	100 x 183	6
2530-01000	1000	128 x 223	6
2530-02000	2000	158 x 290	3
2530-04000	4000	205 x 355	3
2530-06000	6000	250 x 394	2

*Add approximately 1" for hose barb.



Other configurations are available for these as well as all other Bellco Fernbach & Erlenmeyer Flasks.

Nephelo Culture Flask

- Supplied with 25mm Bellco Stainless Steel Closure
- Packed 4 per case

Stock No.	Capacity (mL)	Sidearm OD x OAH (mm)
2571-14130	125	14 x 130
2571-14133	300	14 x 130

For stainless steel closures see stock number 2005-00025



Nephelo Culture Flask

- Threaded neck and threaded sidearm with cleanout port
- Supplied with 38 and 18mm rubber lined black phenolic screw caps
- Packed 4 per case



Stock No.	Capacity (mL)	Sidearm OD x OAH (mm)
2574-12133	300	12 x 130
2574-14133	300	14 x 130
2574-19133	300	19 x 130
2574-12135	500	12 x 130
2574-14135	500	14 x 130
2574-19135	500	19 x 130
2574-12131	1000	12 x 130
2574-14131	1000	14 x 130
2574-19131	1000	19 x 130

Nephelo Culture Flask w/3 Baffles

- Supplied with 25mm Bellco Stainless Steel Closure
- 3 Baffles increase culture oxygenation
- Packed 4 per case

Stock No.	Capacity (mL)	Sidearm OD x OAH (mm)
2578-12133	300	12 x 130
2578-14133	300	14 x 130
2578-19133	300	19 x 130



Nephelo Culture Flask w/3 Baffles

- Threaded neck and threaded sidearm with cleanout port
- 3 Baffles increase culture oxygenation
- Supplied with 38mm and 18mm rubber lined black phenolic cap
- Packed 4 per case



Stock No.	Capacity (mL)	Sidearm OD x OAH (mm)
2581-14133	300	14 x 130
2581-19133	300	19 x 130
2581-14135	500	14 x 130
2581-19135	500	19 x 130

For additional screw caps, see Stock Numbers 2029-00018 and 2029-00038

Shake Flask w/3 Baffles

- Ideal for preliminary fermentation and bacterial growth studies
- DeLong® style neck and three side baffles
- Borosilicate glass Type 1, Class A
- Closures sold separately

Stock No.	Capacity (mL)	Closure (mm)	OD x OAH (mm)	Case Qty.
2540-00050	50	18	50 x 105	12
2540-00125	125	25*	66 x 136	12
2540-00250	250	38	80 x 160	12
2540-00300	300	38	88 x 170	12
2540-00500	500	38	100 x 205	12
2540-01000	1000	38	128 x 235	6
2540-02000	2000	38	160 x 295	3

*Uses 25 mm Stainless Steel Closures Only, see page G-9



Shake Flask w/3 Baffles

- Break resistant lip and three side baffles
- Borosilicate glass, Type 1, Class A
- Designed to fit all Bellco Orbital Shakers

Stock No.	Capacity (mL)	OD x OAH (mm)	Case Qty.
2541-00125	125	66 x 116	12
2541-00250	250	80 x 140	12
2541-01000	1000	128 x 220	6
2541-02000	2000	158 x 290	3

For Bellco Orbital Shakers and Flask Accessory Trays, see page E-35



Shake Flask w/3 Extra Deep Baffles

- Break resistant lip
- Three extra deep side baffles
- Borosilicate glass Type 1, Class A

Stock No.	Capacity (mL)	OD x OAH (mm)	Case Qty.
2542-00250	250	80 x 140	12
2542-00300	300	88 x 150	12
2542-00500	500	100 x 183	12
2542-01000	1000	128 x 220	6
2542-02000	2000	158 x 290	3

For Bellco Orbital Shakers and Accessory Trays, see page E-35



Shake Flask w/3 Extra Deep Baffles

- DeLong® style neck
- Three extra deep side baffles for optimal agitation
- Borosilicate glass Type 1, Class A



Stock No.	Capacity (mL)	Closure (mm)	OD x OAH (mm)	Case Qty.
2543-00050	50	18	50 x 105	12
2543-00125	125	25*	66 x 136	12
2543-00250	250	38	80 x 160	12
2543-00300	300	38	88 x 170	12
2543-00500	500	38	100 x 205	12
2543-01000	1000	38	128 x 235	6
2543-02000	2000	38	158 x 295	3
2543-03000	3000	38	184 x 340	3
2543-04000	4000	38	205 x 370	3

*Uses 25 mm Stainless Steel Closures Only.
For Stainless Steel Closures, see page G-9
For KAP-UTS™ Disposable Closures, see page G-10

Shake Flask w/4 Bottom Baffles & Constriction

- DeLong® style neck
- Four extra deep bottom baffles
- Borosilicate glass, Type 1, Class A

Stock No.	Capacity (mL)	Closure (mm)	OD x OAH (mm)	Case Qty.
2547-00250	250	38	81 x 160	12
2547-00500	500	38	100 x 203	12
2547-01000	1000	38	128 x 235	6

For Stainless Steel Closures, see page G-9
For KAP-UTS™ Disposable Closures, see page G-10
For Belco Orbital Shakers and Flask Accessory Trays, see page E-35



Trypsinizing Flask, Graduated with 16mm Sidearm Cap

- Designed with deep side baffles for optimal agitation
- Promotes enzyme digestion of tissue fragments and homogenates into cell suspensions
- Borosilicate glass, Type 1, Class A
- Includes rubber lined, black phenolic screw caps
- Integral dam contains non-trypsinized tissue during decanting
- Acid etched & filled graduations



Stock No.	Capacity (mL)	Graduations (mL)	OD x OAH (mm)	Case Qty.
1989-00125*	125	10, 25, 50	66 x 135	3
1989-00250†	250	50, 75, 100	80 x 163	3
1989-00500†	500	80, 100, 150	100 x 190	3

*Top Screw Cap Size is 24 mm. †Top Screw Cap Size is 38mm.
Sidearm Screw Cap size is 16mm.

Trypsinizing Flask

- Borosilicate glass, Type 1, Class A
- Designed with deep side baffles for optimum agitation
- Break resistant lip
- Large bottom surface for easy access with Bellco Large Orifice Pipettes

Stock No.	Capacity (mL)	OD x OAH (mm)	Case Qty.
1992-00050	50	50 x 80	3
1992-00125	125	66 x 115	3
1992-00250	250	80 x 140	3
1992-00500	500	100 x 183	3
1992-01000	1000	128 x 223	2
1992-02000	2000	158 x 290	2
1992-04000	4000	205 x 360	2

For Magnetic Stirring Bars, see page F-10
 For Large Orifice Pipettes, see Stock Number 1232, page G-27



Volumetric Flask, Clear, To Contain

- Meet ASTM E288 Specifications
- Borosilicate glass, Type 1, Class A
- Permanent graduation line & marking area

Stock No.	Capacity (mL)	Stopper Size	OD x OAH (mm)	Case Qty.
2525-00010	10	9	26 x 96	6
2525-00025	25	9	37 x 123	6
2525-00050	50	13	49 x 152	4
2525-00100	100	13	58 x 181	4
2525-00200	200	16	74 x 220	4
2525-00250	250	16	78 x 239	4
2525-00500	500	19	96 x 279	2
2525-01000	1000	22	122 x 327	2
2525-02000	2000	27	157 x 326	2



Volumetric Flask, Amber, To Contain

- Meet ASTM E288 Specifications
- Borosilicate glass, Type 1, Class A
- For light sensitive materials

Stock No.	Capacity (mL)	Stopper Size	OD x OAH (mm)	Case Qty.
2526-00010	10	9	26 x 96	6
2526-00025	25	9	37 x 123	6
2526-00050	50	13	49 x 152	4
2526-00100	100	13	58 x 181	4
2526-00200	200	16	74 x 220	4



Pre-cleaned Plain Microscope Slides

- Square corners and ground edges



Stock No.	Size (mm)	Thickness (mm)	Case Qty.
5638-11013	25 x 75	0.9 to 1.09	1440
5638-12013	25 x 75	1.10 to 1.30	1440

Pre-cleaned Frosted Microscope Slides

- Available with either one end or both ends frosted
- Thickness (mm) 0.9 to 1.09



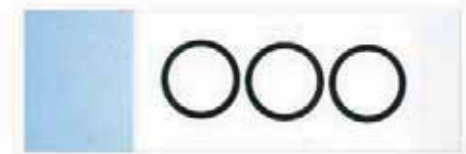
Stock No.	Description	Size (mm)	Case Qty.
5638-00103	Frosted 1 end	25 x 75	1440
5638-10300	Frosted both ends	25 x 75	1440

BELCO PRINTED GLASS MICROSCOPE SLIDES feature fired ceramic printing that provides a micro-edge. This increases liquid retention yet resists volatile solvents thus enabling the slides to withstand repeated autoclaving cycles. A variety of test-specific slides are available, and Bellco will customize slides in multiple colors and configurations to comply with your specific requirements. All slides measure 25mm x 75mm.

Reich Counting Slide

- Modification of the Breed Counting Technique
- Spreading a known volume of solution over a known area permits a calculation of bacteria per sample
- Three rings with each interior area measuring 1cm²

Stock No.	Description	Case Qty.
5638-01920	Reich Slide	144



Somatic Cell Count Slide

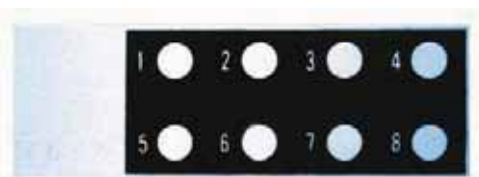
- Useful for direct microscopic counts of somatic cells in cow's milk
- Spread 0.01ml sample onto each circle and then dry and stain
- Count cells under oil immersion microscopy

Stock No.	Description	Case Qty.
5638-01930	Somatic Cell Slide	144



Fluorescent Antibody Slide

- For indirect fluorescent antibody tests including test for toxoplasmosis
- Black ceramic background with eight rings (6mm in diameter)



Stock No.	Description	Case Qty.
5638-01940	Fluorescent Antibody Slide	144

Petri Dish Spreader

- Ideal for spreading inoculum over agar face in petri dish cultures
- Manufactured from 4 mm OD Borosilicate glass rod



Stock No.	Style	Length (mm)	Case Qty.
5654-00090	90° bend	130	50
5654-00120	120° bend	130	50



Cellometer™ Disposable Dual Cell Counting Chamber, Glass/Plastic
Cellometer™ Disposable Dual Cell Counting Chamber, Plastic

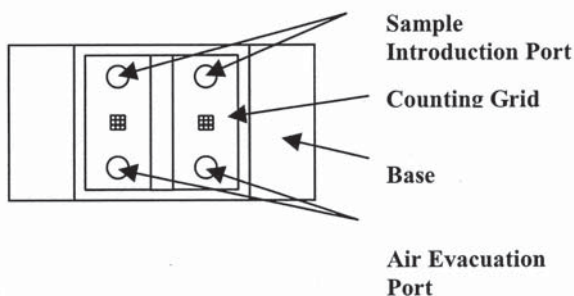
The Cellometer Glass/Plastic Disposable Cell Counting Chamber features an improved Neubauer counting grid on plastic that is mounted onto a standard 25 x 75mm (1x3”) glass slide. The dual counting chamber has a sample introduction port, counting grid and air evacuation port and is ideal for laboratories working with infectious samples. Duplicate samples may be counted, or control/unknown samples may be counted on the same slide. No coverslip is required for the Cellometer thus avoiding counting errors.

The Cellometer All Plastic Disposable Cell Counting Chambers feature the same Neubauer counting grid mounted onto a 20 x 75mm (3/4 x 3”) plastic base. The same procedure applies as for the glass/plastic counting chamber.

Procedure

1. Pipette 20µl of cell suspension through sample port
2. Place Cellometer under optical microscope and adjust for phase contrast onto grid/cells
3. Count cells following standard procedures
4. Calculate cell concentration (cell concentration = Dilution x (Total count /3.4*) x 10⁴
 *liquid layer between grid film and base is approximately 85µm.
5. Dispose of counting chamber.

Cellometer™



Stock No.	Description	Case Qty	List Price
5638-20005	Dual Chamber w/Glass Base	5	25.00
5638-20025	Dual Chamber w/Glass Base	25	80.00
5638-20100	Dual Chamber, Plastic	100	300.00

M Tub

- mTub Washing Tray for Microarray Products, PP
- mBox Slide Handling Tray for Microarray Slides, PP
- mBox Handle, SST



The **mTub** is a disposable PP tray for immersing or washing microarray products. Engineered to hold the mBox, it will accept most glass and stainless steel boats currently on the market. Packed 10/case.

The **mBox** is designed to immerse 20 slides in liquid during blocking, denaturing and post-arraying. The mBox separates from the slide rack and prevents damage during shipping and processing. The slide rack is designed for easy slide removal from the box and fits standard microtiter plate format for centrifugation.

The mBox is manufactured from PP and will withstand a continuous use temperature of 220°F (104°C)

The **mBox Handle** is a removable stainless steel handle that is snaps on and off as needed. Packed 1/case.

Stock No.	Description	Case Qty
5638-30100	mBox	10
5638-30200	mHandle	1
5638-30300	mTub	10



BELCO PIPETTES

Bellco manufactures all precision pipettes from Type 1 Class A Borosilicate glass. All Bellco pipettes feature tempered tips and permanent silk screened graduations to withstand repeated usage and alkali washings. Pipette accessories include the Pipette Plugger, a variety of canisters and single and multiple channel pipettors.

Personalizations

Personalization is free on orders for 5 cases or more (sizes and styles may be assorted) of our standard case quantities of 18 and 12 each. Orders for less than 5 cases will be charged an additional amount per pipette. Over 1000 standard identifications such as Microbiology, Virology, Cell Biology, Bacteriology and Biochemistry are available and are applied with a permanent amber stain. Up to eight (8) characters (including spaces) fit on “shortie” pipettes and twelve (12) characters (including spaces) fit on conventional pipettes. A nominal fee will be charged for new screens, which remain on file for future use. **Bulk-Pak Pipettes** may be personalized for an additional per pipette charge. Contact Customer Service for pricing or additional information. Orders for personalized ware must be placed in writing.

Color Coding

Color coding is free on orders for 5 cases or more (minimum 2 cases per color, sizes and styles may be assorted) of our standard case quantities of 18 and 12 each. Orders for less than 5 cases (minimum 2 per color) will be charged an additional amount per pipette. Please note that the specified color will be added to the already existing color code. **Bulk-Pak Pipettes** may be color coded for an additional cost per pipette. Contact Customer Service for pricing or additional information. Orders for color coded ware must be placed in writing.

All Personalization & Additional Color Coding orders are subject to a 5% over/underrun. Pasteur Pipettes are excluded from personalization or color coding. Please be sure desired personalization and/or color coding is ordered correctly as we cannot accept returns or issue credit on this ware.

Serological Pipette, TD

- Plain top promotes rapid, even flow
- Calibrated to tip
- Tempered tip; to deliver, blow out.

Stock No.	Size (mL)	Tolerance ±(mL)	OAL (mm)	Color Code	Case Qty.
1212-01001	1 x 0.01	0.02	350	Yellow	18
1212-02010	2 x 0.1	0.02	350	Green	18
1212-05010	5 x 0.1	0.04	350	Blue	18
1212-10010	10 x 0.1	0.06	350	Orange	18
1212-25010	25 x 0.1	0.1	400	White	18



Serological Pipette, Bulk-Pak, TD

- Plain top promotes rapid, even flow
- Calibrated to tip
- Tempered tip; to deliver, blow out

Stock No.	Size (mL)	Tolerance ±(mL)	OAL (mm)	Color Code	Case Qty.
1202-00201	0.2 x 0.01	0.008	325	Black	250
1202-01001	1 x 0.01	0.02	350	Yellow	250
1202-02010	2 x 0.1	0.02	350	Green	250
1202-05010	5 x 0.1	0.04	350	Blue	250
1202-10010	10 x 0.1	0.06	350	Orange	250
1202-25010	25 x 0.1	0.1	400	White	250

Serological Pipette with Cotton Plugging Top, TD

- Constricted top for cotton plugging (supplied without cotton)
- Calibrated to tip
- Tempered tip; to deliver, blow out

Stock No.	Size (mL)	Tolerance ±(mL)	OAL (mm)	Color Code	Case Qty.
1210-00201	0.2 x 0.01	0.008	330	Black	18
1210-01010	1 x 0.1	0.02	350	Red	18
1210-01001	1 x 0.01	0.02	350	Yellow	18
1210-02010	2 x 0.1	0.02	350	Green	18
1210-02001	2 x 0.01	0.02	350	White (2)	18
1210-05010	5 x 0.1	0.04	350	Blue	18
1210-10010	10 x 0.1	0.06	350	Orange	18
1210-25010	25 x 0.1	0.1	400	White	18
1210-50020	50 x 0.2	0.4	475	Red	12



Serological Pipette with Cotton Plugging Top, Bulk-Pak, TD

Stock No.	Size (mL)	Tolerance ±(mL)	OAL (mm)	Color Code	Case Qty.
1200-00201	0.2 x 0.01	0.008	330	Black	250
1200-01001	1 x 0.01	0.02	350	Yellow	250
1200-02010	2 x 0.1	0.02	350	Green	250
1200-05010	5 x 0.1	0.04	350	Blue	250
1200-10010	10 x 0.1	0.06	350	Orange	250
1200-25010	25 x 0.1	0.1	400	White	250

Serological Pipette with Cotton Plugging Top, Mixed Bulk-Pak, TD

- Three sizes packed in one case: 75each 1ml, 75each 5ml and 100each 10ml
- Constricted top for cotton plugging (supplied without cotton)
- Calibrated to tip
- Tempered tip; to deliver, blow out

Stock No.	Size (mL)	Tolerance ±(mL)	OAL (mm)	Color Code
1200-01510	1 x 0.01	0.02	350	Yellow
	5 x 0.1	0.04	350	Blue
	10 x 0.1	0.06	350	Orange



Serological Pipette with Cotton Plugging Top and Large Orifice

- 3mm orifice for handling tissue homogenates, cell suspensions
- Constricted top for cotton plugging (supplied without cotton)
- Calibrated to tip
- Tempered tip; to deliver, blow out

Stock No.	Size (mL)	Tolerance ±(mL)	OAL (mm)	Color Code	Case Qty.
1232-25010	25 x 0.1	0.1	400	White	18
1232-50020	50 x 0.2	0.5	470	Red	12

For Pipette Plunger and Cotton Roving, see page G-31

Serological “Shortie” Pipette, TD

- Shorter length facilitates use under biological hoods
- Plain top promotes rapid, even flow (use rubber bulb to fill)
- Calibrated to tip
- Tempered tip; to deliver, blow out



Stock No.	Size (mL)	Tolerance ±(mL)	OAL (mm)	Color Code	Case Qty.
1224-02010	2 x 0.1	0.025	160	Green	18
1224-05010	5 x 0.1	0.08	160	Blue	18
1224-10020	10 x 0.2	0.12	175	Orange	18

Serological “Shortie” Pipette, Bulk-Pak, TD

Stock No.	Size (mL)	Tolerance ±(mL)	OAL (mm)	Color Code	Case Qty.
1204-02010	2 x 0.1	0.025	160	Green	150
1204-05010	5 x 0.1	0.08	160	Blue	150
1204-10020	10 x 0.2	0.12	175	Orange	150

Serological “Shortie” Pipette with Cotton Plugging Top, TD

- Shorter length facilitates use under biological hoods
- Constricted top for cotton plugging (supplied without cotton)
- Calibrated to tip
- Tempered tip; to deliver, blow out



Stock No.	Size (mL)	Tolerance ±(mL)	OAL (mm)	Color Code	Case Qty.
1226-01010	1 x 0.1	0.02	175	Red	18
1226-02010	2 x 0.1	0.025	175	Green	18
1226-05010	5 x 0.1	0.08	175	Blue	18
1226-10020	10 x 0.2	0.12	190	Orange	18
1226-25050	25 x 0.5	0.25	230	White	18

For Pipette Plugger and Cotton Roving, see page G-31

Serological “Shortie” Pipette w/ Cotton Plugging Top, Bulk-Pak, TD

Stock No.	Size (mL)	Tolerance ±(mL)	OAL (mm)	Color Code	Case Qty.
1206-01010	1 x 0.1	0.02	175	Red	150
1206-02010	2 x 0.1	0.025	175	Green	150
1206-05010	5 x 0.1	0.08	175	Blue	150
1206-10020	10 x 0.2	0.12	190	Orange	150

For Pipette Plugger and Cotton Roving, see page G-31

Serological “Shortie” Pipette with Large Orifice, TD

- 3mm orifice for handling tissue homogenates and cell suspensions
- Shorter length than standard pipettes for use under biological hoods
- Plain top promotes rapid, even flow (use rubber bulb to fill)
- Calibrated to tip
- Tempered tip; to deliver, blow out

Stock No.	Size (mL)	Tolerance ±(mL)	OAL (mm)	Color Code	Case Qty.
1227-10020	10 x 0.2	0.22	178	Orange	18



Serological “Shortie” Pipette w/ Cotton Plugging Top & Large Orifice, TD

Stock No.	Size (mL)	Tolerance ±(mL)	OAL (mm)	Color Code	Case Qty.
1228-05010	5 x 0.1	0.14	175	Blue	18
1228-10020	10 x 0.2	0.22	190	Orange	18
1228-25050	25 x 0.5	0.25	225	White	18

For Pipette Plugger and Cotton Roving, see page G-31

Disposable Pasteur Pipette

- For transfer of all infectious materials, culture media and for routine sampling
- Body diameter of 7mm

Stock No.	Glass	OAL (in)	Tip (in)	Body (in)	Inner Pack	Case Qty.
1277-10005	Boro	5.75	2.25	3.5	250	1000
1277-10009	Boro	9.0	5.0	4.0	250	1000
1277-20005	Flint	5.75	2.25	3.5	250	1000
1277-20009	Flint	9.0	5.0	4.0	250	1000



Disposable Pasteur Pipette with Cotton Plugged Top

Stock No.	Glass	OAL (in)	Tip (in)	Body (in)	Inner Pack	Case Qty.
1278-10005	Boro	5.75	2.25	3.5	250	1000
1278-10009	Boro	9.0	5.0	4.0	250	1000
1278-20005	Flint	5.75	2.25	3.5	250	1000
1278-20009	Flint	9.0	5.0	4.0	250	1000



Pasteur Capillary Pipette

- Straight tip with 1.5 to 2 mm orifice
- Borosilicate glass Type 1, Class B

Stock No.	Body O.D. (mm)	Body Length Inches	Tip Length Inches	Case Qty.
1271-40004	8	4	4	288
1271-50003	8	5	3	288
1271-60002	8	6	2	288



Pasteur Capillary Pipette

- Bent tip with 1.5 to 2 mm orifice
- Borosilicate glass Type 1, Class B

Stock No.	Body O.D. (mm)	Body Length Inches	Tip Length Inches	Case Qty.
1273-40004	8	4	4	144
1273-50003	8	5	3	144
1273-60002	8	6	2	144



Flat Bottom Glass Pipette Canister w/Silicone Pad

- Manufactured from borosilicate glass
- All components will withstand repeated dry or steam heat sterilization
- Bottom pad prevents chipping of pipette tips



Stock No.	Description	Size (mm)	Case Qty.
1290-00250	Canister Only	38 x 250†	6
1290-00300	Canister Only	38 x 300	6
1290-00430	Canister Only	38 x 430	6
1290-38250	Canister Complete*	38 x 250†	6
1290-38300	Canister Complete*	38 x 300	6
1290-38430	Canister Complete*	38 x 430	6

*Supplied with Stainless Steel Closure

†Recommended for "Shortie" Pipettes

For additional SST closures, see 2005 series, page G-9

APPROXIMATE GLASS PIPETTE CANISTER CAPACITIES

Pipette Type	Volume	38 x 430mm	38 x 300mm	38 x 250mm
Serological	0.1	20	-	-
Serological	0.2	20	-	-
Serological	1	15	-	-
Serological	2	12	-	-
Serological	5	12	-	-
Serological	10	7	-	-
Serological	25	4	-	-
Pasteur Pipettes to 8"	-	-	-	14
Pasteur Pipettes to 10"	-	-	14	-

Mounting Plate for Pipette Cans

- Stabilizes pipette canisters during use
- Stainless steel construction
- Use with 38mm OD glass pipette canisters



Stock No.	Dimensions	Case Qty.
1288-11111	90 x 90mm	6

Pipette Canister Cushion, PTFE

- Can be repeatedly sterilized using dry or steam heat
- Completely non-toxic, lint free, permanently resilient
- 38mm cushions fit 1287 series round bottom, glass pipette canisters
- 63mm round cushions fit other manufacturers' round, steel canisters

Stock No.	Size (mm)
1286-88815	38
1286-88825	63



Pipette Plugger

- Three speeds: 40, 50 or 60 pipettes per minute
- Operates in continuous or actuated mode
- Uniform plug shape insures proper plug fit
- Supplied with 1 bag of Cotton Roving 7750-22222

Stock No.	Dimensions WxDxH (cm)	Power V/Hz/Amp
7750-11111*	25 x 28 x 24	115/60/1.0
7750-11220	25 x 28 x 24	230/50/0.5
A515-A18	Scissor Blade Assy Only	

*CSA Model

Cotton Roving for Pipette Plugger

- Absorbent, 12 grain premium long-fiber cotton
- Packed two pounds (0.9kg) coiled in plastic bag
- Plugs approximately 35,000 pipettes

Stock No.	Case Qty.
7750-22222	2 lb.



Safetypette Pipette Filler

The Safetypette is uniquely designed to give superior pipetting control to both left and right handed users. The lightweight Safetypette sits comfortably in the hand enabling smooth variable speed control in both aspirating and dispensing.

- Supplied with integral 0.45µm filter and colored pipette cones for color coding in white, mint, mauve and pink
- Comfortable and simple to use
- Precise pipetting control
- Robust and lightweight
- Compatible with blow-out and TD pipettes; 1mL - 100mL
- Simple thumb button operation
- Autoclavable silicone pipette holder

Stock No.	Description
4704-75102	Safetypette w/three cones
4702-66003	Membranes, Pkg/5
4702-66004	Replacement Silicone Pipette Holder



Rubber Pipette Bulbs

- Bulb opening - 4mm
- For Plain Top, Shortie pipettes

Stock No.	Pipette Volume (mL)
1225-11122	1 to 2
1225-11155	5
1225-22222	10



Round Bottom Glass Pipette Canister

- Manufactured from Type 1, Class A borosilicate glass
- Components will withstand repeated dry or steam heat sterilization
- See Chart Page



Stock No.	Description	Size (mm)	Case Qty.
1287-00250	Canister Only	38 x 300	6
1287-00300	Canister Only	38 x 250†	6
1287-00430	Canister Only	38 x 430	6
1287-38250	Canister Complete*	38 x 250†	6
1287-38300	Canister Complete*	38 x 300	6
1287-38430	Canister Complete*	38 x 430	6

*Supplied with Stainless Steel Closure.
 †Recommended for "Shortie" Pipettes
 For additional closures, see 2005 series, page G-9

Stainless Steel Pipette Cans

- Heavy gauge rectangular construction for easy stacking and storage
- Satin finish surface of entire can for convenient marking or coding
- Can be sterilized by autoclave or dry heat (Do Not Exceed 400°F)
- Silicone pads on inside of top and bottom protect pipette tips



Stainless Steel Pipette Can With Silicone Pads

Stock No.	Size (cm)	Pipettes/Can
1217-00409*	11 x 11 x 24	64ea. 5ml/36ea. 10-12ml shortie
1217-11106+	6 x 6 x 16	49ea. 5 3/4" Pasteur
1217-11109+	6 x 6 x 24	49ea. 0.1-2ml/9ea. 10-12ml shortie 49ea. 9" Pasteur
1217-11116+	6 x 6 x 41	49ea. 0.1-0.5ml regular
1217-22216^	7 x 7 x 41	81ea. 0.1-5ml/35ea. 10ml regular
1217-22218^	7 x 7 x 46	23ea. 25ml regular

- A12-81* Replacement Silicone Pad only
- A12-84+ Replacement Silicone Pad only
- A12-442^ Replacement Silicone Pad only

Stainless Steel Pipette Can Without Silicone Pads

Stock No.	Size (cm)	Pipettes/Can
1217-90109	6 x 6 x 24	49ea. 0.1-2ml/9ea. 10-12ml shortie
1217-90216	7 x 7 x 41	81ea. 0.1-5ml/35ea. 10ml regular
1217-90218	7 x 7 x 46	23ea. 25ml regular



RTV 106 Red Silicone Rubber Adhesive Sealant, High Temperature

- High temperature adhesive sealant for replacing silicone pads in pipette canisters
- Easy to use nozzle
- Fully cured in 24 hours
- Adheres to stainless steel, aluminum, glass, ceramic and rigid plastics
- **Warning: Eye irritant**

Specifications

Curing Time: 24 hours
 Temperature Range: -60°C (75°F) to 260°C (500°F)
 Storage Conditions: below 27°C (80°F)
 For Industrial use only

Stock No.	Description
1217-00028	Red Silicone Sealant, 2.8 oz (82mL)

Bellco Pipet-Aids

Bellco Pipet-Aids are lightweight, compact units that are ideal for use under laminar flow hoods. A patented two-finger volume control provides precise fluid uptake and dispensing.

Basic Pipet-Aid features a 115V or 230V pump with Optional Tissue Culture Nose Piece and/or Air Filter.

Portable Pipet-Aid is a rechargeable self-contained unit that provides 2 hours of pipetting before recharging is necessary. Includes battery charger and tissue culture nose piece.

Portable Pipet-Aid XP is a rechargeable self-contained unit with removable stand.

Three independent speed ranges can be set for both fill and dispense rates and the unit provides 2 hours of continuous pipetting without recharging. Includes battery charger and tissue culture nose piece.

Stock No. 115V	Stock No. 230V	Description
1225-80000	1225-80220	Pipet-Aid Basic
1225-88105	1225-88225	Pipet-Aid w/ Tissue Culture Nose Piece
1225-80100	1225-80122	Pipet-Aid w/ Air Filter
1225-88100	1225-88122	Pipet-Aid w/ TC Nose Piece & Air Filter
1225-85000	1225-85220	Portable Pipet-Aid
1225-86000	1225-86220	Pipet-Aid XP

Parts and Accessories

Stock No.	Volt / Hz	Description	Case Qty.
1225-80001		Pipet-Aid Handle	1
1225-80002	115/60	Pipet-Aid Pump	1
1225-80003	115/60	Pipet-Aid Pump with Filter	1
1225-80056		Pipet Holder Insert	6
1225-80222	230/50	Pipet-Aid Pump	1
1225-80223	230/50	Pipet-Aid Pump with Filter	1
1225-88050		Tissue Culture Nose Piece	1
1225-88051		Tissue Culture Nose Piece Filters	5
1225-88052		Tissue Culture Nose Piece Filters	50



Dounce Tissue Homogenizer, Glass

- Designed for disruption of whole cells leaving cell nuclei undamaged
- Polished tube and pestles
- All glass construction
- Two pestles supplied with each unit
 - Large clearance pestle A for initial processing
 - Small clearance pestle B completes homogenization

Stock No.	Capacity (mL)	Large Pestle A Clearance (in)	Small Pestle B Clearance (in)	Tube OAL (mm)
1984-10002	2	.0030-.0050	.0005-.0025	60
1984-10007	7	.0028-.0047	.0008-.0022	125
1984-10015	15	.0035-.0065	.0010-.0030	157
1984-10040	40	.0030-.0060	.0010-.0030	215
1984-10100	100	.0020-.0100	.0005-.0055	232



Potter-Elvehjem Tissue Homogenizer, Glass

- Clearance between pestle & tube is .004”-.006”
- Suitable for connective tissue processing

Stock No.	Capacity (mL)	Pestle Overall x Shaft OD (mm)	Tube OAL x Reservoir OD (mm)
1983-10019	1	145 x 5	93 x 13
1983-10021	5	205 x 6	140 x 16
1983-10022	8	215 x 8	150 x 18
1983-10023	17	265 x 10	172 x 25
1983-10024	45	315 x 10	220 x 32



Potter-Elvehjem Tissue Homogenizer w/ PTFE Pestle

- PTFE pestle and unground tube
- Sizes 21 to 24 have radial serrations on the lower portion of the pestle
- Clearance between pestles and tubes is .004” - .006”
- Suitable for softer tissues such as brain and liver

Stock No.	Capacity (mL)	Pestle AL x Shaft OD (mm)	Tube OAL x Reservoir OD (mm)
1983-20018	0.5	130 x 3	80 x 12
1983-20019	1	154 x 5	95 x 12
1983-20020	3	154 x 5	115 x 12
1983-20021	5	215 x 6	140 x 15
1983-20022	8	212 x 6	150 x 19
1983-20023	17	266 x 6	175 x 25
1983-20024	45	269 x 6	220 x 32



Conical Tissue Homogenizer, Glass

- Conical shaped pestle
- Large area for most efficient grinding
- Ideal for tissues such as muscle, heart and lung
- Designed for use with homogenizing motors
- Clearance between pestles and tubes is .004” - .006”

Stock No.	Capacity (mL)	Pestle Overall x Shaft OD (mm)	Tube OAL x Reservoir OD (mm)
1976-10020	1	155 x 4.5	80 x 13
1976-10021	3	210 x 6	120 x 16
1976-10022	5	228 x 6	150 x 18
1976-10023	15	268 x 6	175 x 25
1976-10024	30	305 x 10	215 x 32
1976-10025	50	330 x 10	225 x 38



Tenbroeck Tissue Homogenizer, Glass

- Hollow glass pestle allows addition of ice water for chilling samples during homogenization
- Tooled pestle for use with rubber stopper (not supplied)
- Clearance between pestles and tubes is .004” - .006”
- Ground Tube

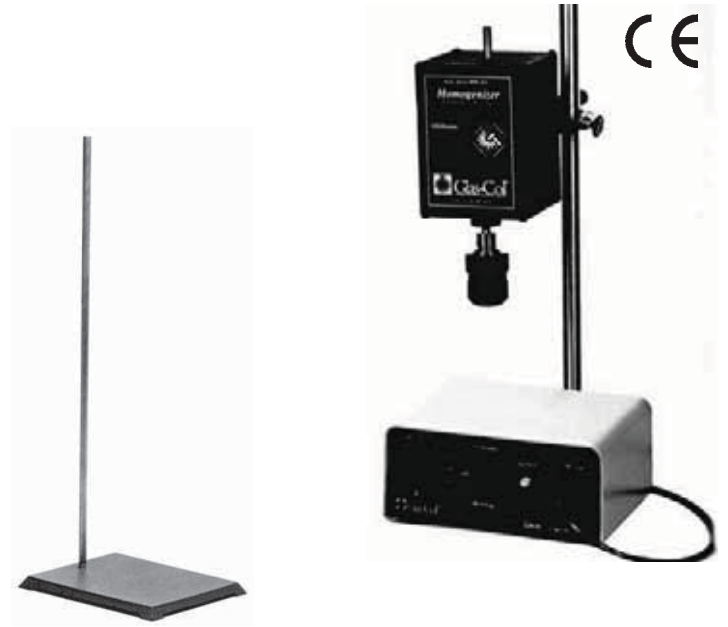
Stock No.	Capacity (mL)	Stopper No	Pestle OAL x Shaft OD (mm)	Tube OAL x Reservoir OD (mm)
1982-10002	2	00	160 x 50	100 x 30
1982-10007	7	00	195 x 50	125 x 30
1982-10015	15	1	250 x 65	157 x 38
1982-10040	40	3	315 x 90	215 x 55



Homogenizer Overhead Drive

- Permanent magnet motor, 5/16" OD shafts
- High speed shaft: 4000rpm (26 in-lb. torque)
- Low speed shaft: 333 rpm (3.6 in-lb. torque)
- Electronic motor controller
- Switch for reversing pestle direction

Stock No.	Description
1981-20115	115V/60Hz/2.5A
1981-20230	230V/50Hz/2.5A
1981-30000	Stand
1981-40000	Glass Pestle Adapter, 10mm
1981-50000	Glass Pestle Adapter, 6mm



Centrifuge Tube

- Type 1, Class A Borosilicate glass
- Fits I.E.C. number 353A centrifuge cup
- Supplied with 38mm black phenolic rubber lined screw cap

Stock No.	Capacity (mL)	O.D. x OAL (mm)	Case Qty.
3045-00600	590	96 x 173	4
3045-00800	780	96 x 173	4

*Design suggested by Dr. Gary H. Cohen and Manuel Ponce de Leon MS
Univ of Penna. Dental School*



Rubber Cushion For Centrifuge Tubes

- Prevents breakage
- Adds stability

Stock No.	Fits Tubes (mL)	Case Qty.
3045-10600	600	4
3045-10800	800	4



COLOR CODE ORDERING INFORMATION FOR CULTURE TUBES

Colors available: white, blue, green, red, black, yellow, orange, and brown. When ordering color coding, use the regular stock number shown and specify color desired. For example, if you need 16 x 150 Screw Cap Culture Tubes that are color coded blue, order 2012-16150-Blue.

Orders for color coding are subject to 5% over or under runs.

Minimum order for color coding - two (2) cases of same (1) color.

A nominal fee will be charged per tube.

Disposable Plain Top Culture Tube, Round Bottom

- Flint Glass - #2 wall weight
- Accepts Bellco Stainless Steel & KAP-UTS™ Closures



Stock No.	OD x OAL (mm)	Closure (mm)	Case Qty.
2010-25100	25 x 100	25	144
2010-25150	25 x 150	25	144
2010-25200	25 x 200	25	144

For Disposable KAP-UTS™ Closures, see page G-10

For Stainless Steel Closures, see page G-9

Plain Top Culture Tube, Round Bottom

- Borosilicate glass
- Accepts Bellco Stainless Steel & KAP-UTS™ Closures

Stock No.	OD x OAL (mm)	Closure (mm)	Case Qty.
2011-13100	13 x 100	13	288
2011-16125	16 x 125	16	144
2011-18150	18 x 150	18	144
2011-25150	25 x 150	25	72
2111-38200	38 x 200	38	36

For Disposable KAP-UTS™ Closures, see page G-10

For Stainless Steel Closures, see page G-9

Screw Cap Culture Tube, Round Bottom

- Manufactured from borosilicate glass
- Includes long skirted black phenolic screw cap with white rubber liner

Stock No.	OD x OAL (mm)	Closure	Case Qty.
2012-13100	13 x 100	13-415	144
2012-16150	16 x 150	15-415	144
2112-38200	38 x 200	38-415	36

For additional caps, see Stock Number 2029, page G-9



Gas Fermentation Tube, Round Bottom

- Tubes are inverted in bottom of larger tube for collection of gases
- Disposable standard flint glass with 1.15mm wall

Stock No.	OD x OAL (mm)	Case Qty.
2040-08029	8 x 29	144

Hungate Type Anaerobic Culture Tube

The Hungate Anaerobic Culture Tube was developed for growing and maintaining anaerobic bacteria and culture conditions. The technique is simple:

1. Exclude oxygen by flushing the tube with the desired gas
2. Add 4.5mL of pre-reduced anaerobic agar medium into tube
3. Seal the tube with the butyl rubber stopper and screw cap and autoclave
4. Inoculate with a syringe
5. Incubate in water bath

Hungate Culture Tube

- Gas tight tube designed for maintaining anaerobic culture conditions
- Method of Hungate et.al, utilizes syringe methods for anaerobiosis
- Anaerobic culture tubes contain three autoclavable parts:
 - a) screw cap with a 9mm opening,
 - b) flange type gas impermeable black butyl rubber stopper
 - c) disposable screw cap culture tube

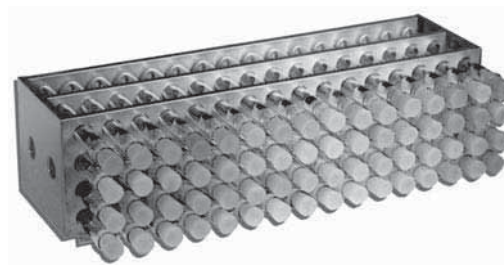
Stock No.	Description	Size (mm)	Case Qty.
2047-16125	Hungate Tube Complete	16 x 125	250
Components			
2047-16000	Screw Cap Only	15	250
2047-11600	Septum Stopper Only	13	250
2047-00125	Hungate Tube Only	16 x 125	250



Roller Culture Tube Rack for Hungate Tubes

- Designed for use with roller culture tubes
- Stainless steel construction
- Spring clip prevents tubes from moving in rack
- Spot-welded to ensure rigidity and durability

Stock No.	Tube Size (mm)
2028-16064	16



Anaerobic Culture Tube with Aluminum Seal

- Gas tight tube designed for maintaining anaerobic conditions
- Useful for studies involving methane-producing bacteria
- Gas impermeable, blue butyl rubber septum type stopper
- Manufactured from borosilicate glass

Stock No.	Description	Size (mm)	Case Qty.
2048-18150	Aluminum Seal Tube Complete	18 x 150	100
Components			
2048-11800	Septum Stopper	20	100
2048-00150	Aluminum Seal Tube	18 x 150	100
Accessories			
2048-11020	Aluminum Seal	20	1000
2048-10020	Seal Crimper	20	1



Racks for use with this tube, see Stock Number 2027, page G-39

LEIGHTON CULTURE TUBES are useful for the study of pathogenic effects of viruses on cells as well as sponge matrix cultures and nutritional studies. Use cover slips for preparing explant tissue cultures with Leighton Culture Tubes.

Short Style Leighton Type Tissue Culture Tube

- Borosilicate glass
- Extra long working area yet short overall length promotes convenient handling
- Short neck allows easy entry and removal of cover slips
- Fits Bellco Self-Locking Racks
- Packed 36 per case



Stock No.	Tube Size (mm)	Window Size (mm)	Coverslip Size (mm)	Stopper Size
1903-19095	19 x 95	14 x 55	13 x 27 , 14 x 55, 13 x 54	14 x 55

Screw Cap Short Style Leighton Type Tissue Culture Tube

- Borosilicate glass
- Includes long skirted screw cap with nontoxic, white rubber liner
- Extra long working area yet short overall length for convenient handling
- Short neck provides easy entry and removal of cover slips
- Fits Bellco Self-Locking Racks



Stock No.	Tube Size (mm)	Window Size (mm)	Coverslip Size (mm)	Screw Cap	Case Qty.
1904-16095	16 x 93	11 x 55	9 x 22, 9 x 35, 9 x 50	15-415	36
1904-19105	19 x 105	14 x 55	10.5 x 22, 10.5 x 35, 10.5 x 50	18-415	36

For coverslips, see Stock Number 1916, page G-14

For screw caps, see Stock Number 2029, page G-9

For stainless steel rack, see Stock Number 1917-00016. Page G-39

Plain Top Leighton Type Tissue Culture Tube

- Borosilicate glass
- White marking area provided
- Fits Bellco Self-Locking Racks
- Packed 36 per case



Stock No.	Tube Size (mm)	Window Size (mm)	Coverslip Size (mm)	Stopper Size
1906-16150	16 x 150	11 x 37	10.5x22 or 10.5x35	0

Screw Cap Leighton Type Tissue Culture Tube

- Borosilicate glass
- White marking area provided
- Includes long skirted screw cap with nontoxic, white rubber liner
- Fit Bellco Self-Locking Racks
- Packed 36 per case



Stock No.	Tube Size (mm)	Window Size (mm)	Coverslip Size (mm)	Screw Cap
1908-16125	16 x 125	11 x 37	9 x 22, 9 x 35	15-415

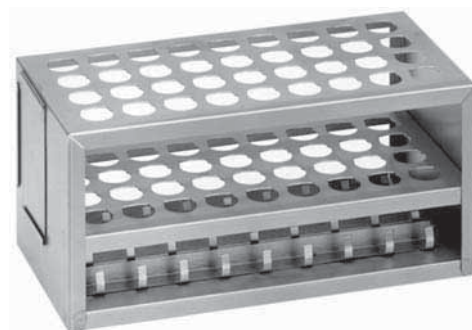
For coverslips, see Stock Number 1916, page G-14

For screw caps, see Stock Number 2029, page G-9

For stainless steel rack, see Stock Number 1917-00016. Page G-39

Leighton Self Locking Tube Rack

- For Leighton type tissue culture tubes
- Hinged front of rack locks tubes into position



Stock No.	For Tube Lengths (mm)	Tubes Per Rack
1917-16000	83 to 93	36
1917-00016	125 to 150	36

Stainless Steel Culture Tube Racks

- Will not rust or deteriorate in water baths or CO₂ atmospheres.
- Available in a variety of configurations for all popular tube sizes.

Stock No.	Tube Size (mm)	Tubes/Rack	Approx. Size (mm) WxDxH
2027-13012	13	12	70 x 60 x 50
2027-13040	13	40	165 x 70 x 55
2027-13072	13	72	200 x 105 x 55
2027-13090	13	90	230 x 125 x 60
2027-16024	16	24	125 x 85 x 80
2027-16040	16	40	200 x 85 x 80
2027-16048	16	48	235 x 85 x 80
2027-16072	16	72	235 x 120 x 80
2027-16090	16	90	295 x 120 x 80
2027-16120	16	120	235 x 195 x 80
2027-16150	16	150	485 x 125 x 80
2027-18024	18	24	140 x 95 x 80
2027-18040	18	40	230 x 95 x 95
2027-18072	18	72	275 x 150 x 80
2027-20012	20 to 22	12	115 x 105 x 85
2027-20040	20 to 22	40	260 x 105 x 80
2027-20048	20 to 22	48	210 x 160 x 90
2027-25012	25	12	125 x 95 x 105
2027-25036	25	36	270 x 125 x 105
2027-25040	25	40	300 x 125 x 105
2027-25072	25	72	340 x 180 x 105
2027-25410	25	40	300 x 125 x 55
2027-38012	38	12	175 x 130 x 130
2027-38024	38	24	255 x 175 x 130
2027-38040	38	40	410 x 175 x 130
2027-38206	38	12	255 x 88 x 130





Roller Drum with Digital Display

- Digital speed display has 0.55" LCD
- Locking speed knob
- Adjustable foot for 0-7° drum tilt
- Preset speed range is .5 to 50rpm (.3 to 3 and .2 to 12) via selector switch
- Four drums available to hold most tube sizes
- Rear speed range switch insures display accuracy

Stock No.	Description
7736-10115	Base only, 115V/50-60Hz/20W
7736-10230	Base only, 230V/50Hz/20W

Replacement Drums

Stock No.	Dimensions w/base	# Tubes x OD (mm)
7736-20164	46x28x55cm (18x15x21.5")	164 x 16
7736-20351	46x28x61cm (18x15x24")	351 x 16
7736-20025	46x28x61cm (18x15x24")	156 x 25
7736-20050	46x28x61cm (18x15x24")	128 x 30

Blood Tube Rotator

- Fully adjustable mixing angle
- Quick, easy loading and removal of tubes
- Holds up to 20 tubes with diameter 9-19mm
- Constant speed of 33 rpm
- Tubes and tube holder sold separately

Specifications

Number of tubes	20
Tube size (diameter)	9mm to 19mm
Rotation speed:	33rpm
Dimensions (WxDxH)	9 x 9 x 10.5" (23 x 23 x 26cm)



Stock No.	Description
4704-54115	115V/60Hz
4704-55027	230V/50Hz
4704-54142	Tube holder

Replacement Drums

Stock No.	Dimensions w/base	# Tubes x OD (mm)
7736-20164	46x28x55cm (18x15x21.5")	164 x 16
7736-20351	46x28x61cm (18x15x24")	351 x 16
7736-20025	46x28x61cm (18x15x24")	156 x 25
7736-20050	46x28x61cm (18x15x24")	128 x 30

Mini Tube Roller

- Accommodates various bottle dimensions by removing idler rollers
- Speed range up to 40rpm (depending upon bottle OD)
- Minimum OD 16mm; maximum OD 120mm
- Idler rollers are easily removable
- Lightweight aluminum construction

Specifications

Dimensions (WxDxH)	15 x 17 x 3"
Weight:	12lbs
Max bottle length:	10"
Maximum Load:	10lbs
# Idler rollers	5
# Drive rollers	6

Stock No.	Description
7622-30115	Tube Roller, 115V*
7622-30230	Tube Roller, 230V*
7622-30010	Drive Roller
7622-30020	Idler Roller

*includes inline power supply

